



How to add new device models and classes to NetVoyant

created by: Rainer Bemsel - Version 1.0 - Dated: Jan/02/2010

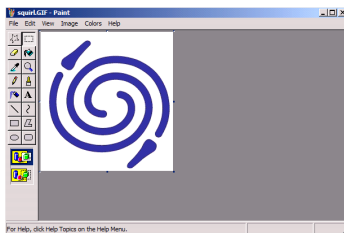
The purpose of this document is to provide you the necessary steps to add new device models and classes to NetVoyant. My new device models for this document were all models of the PacketShapers and I did choose as Device Classes a new group called "Bandwidth Management" - If you take the PacketShaper MIB, you can find the OIDs of mostly all Models, Packeteer has built.

PacketShaper 900	1.3.6.1.4.1.2334.1.1.23
PacketShaper 1200	1.3.6.1.4.1.2334.1.1.18
PacketShaper 1400	1.3.6.1.4.1.2334.1.1.22
PacketShaper 1500	1.3.6.1.4.1.2334.1.1.6
PacketShaper 1550	1.3.6.1.4.1.2334.1.1.14
PacketShaper 1700	1.3.6.1.4.1.2334.1.1.21
PacketShaper 2500	1.3.6.1.4.1.2334.1.1.4
PacketShaper 3500	1.3.6.1.4.1.2334.1.1.19
PacketShaper 4500	1.3.6.1.4.1.2334.1.1.5
PacketShaper 6500	1.3.6.1.4.1.2334.1.1.11
PacketShaper 7500	1.3.6.1.4.1.2334.1.1.20
PacketShaper 8500	1.3.6.1.4.1.2334.1.1.12
PacketShaper 9500	1.3.6.1.4.1.2334.1.1.15
PacketShaper 10000	1.3.6.1.4.1.2334.1.1.17
iShaper 400	1.3.6.1.4.1.2334.1.2.1
iShaper 800	1.3.6.1.4.1.2334.1.2.2
Talon TC 30	1.3.6.1.4.1.2334.1.3.1

As I said, I did the document with PacketShaper models, but you can use any OID to add new device models into NetVoyant.

Let's take a PacketShaper 1400 and add it into NetVoyant.

1. Optional -> Add a nice GIF file into the repository to represent the new device model.



This GIF File (18x18 pixels) will be used as the new icon for all PacketShaper in NetVoyant. I've added all my custom icons to a zip file, which can be downloaded

<http://www.bemsel.com/tools/nv-customicons.zip>

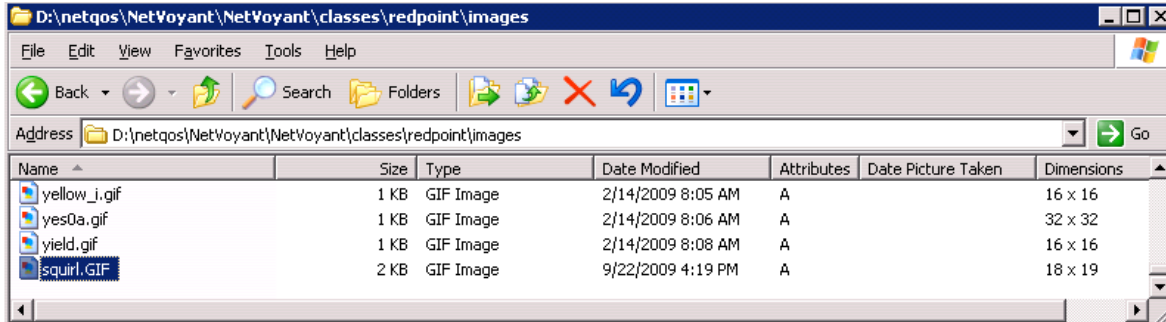


DISCLAIMER

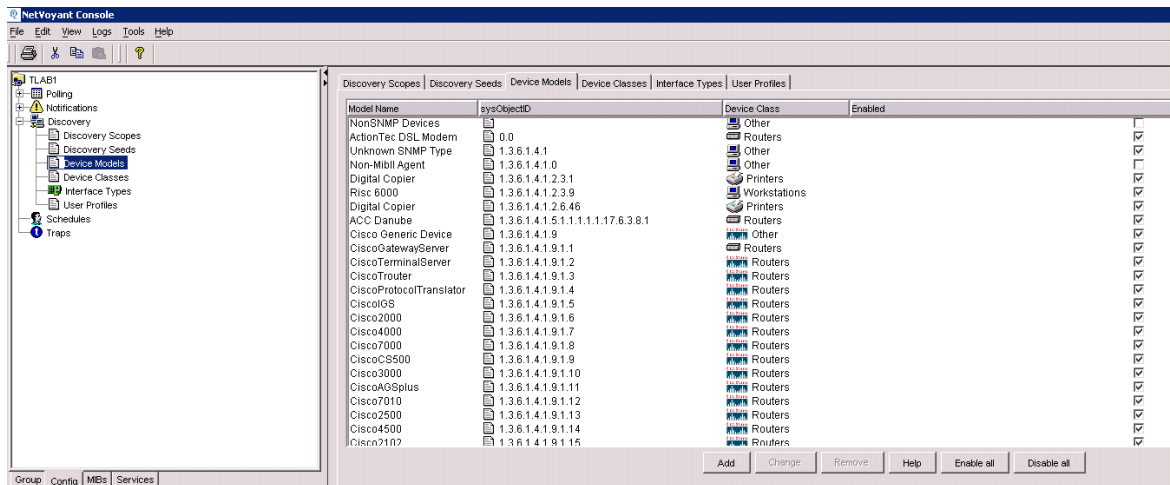
This Technical Tip or TechNote is provided as information only. I cannot make any guarantee, either explicit or implied, as to its accuracy to specific system installations / configurations. Readers should consult each Vendor for further information or support.

Although I believe the information provided in this document to be accurate at the time of writing, I reserve the right to modify, update, retract or otherwise change the information contained within for any reason and without notice. This technote has been created after studying the material and / or practical evaluation by myself. All liability for use of the information presented here remains with the user.

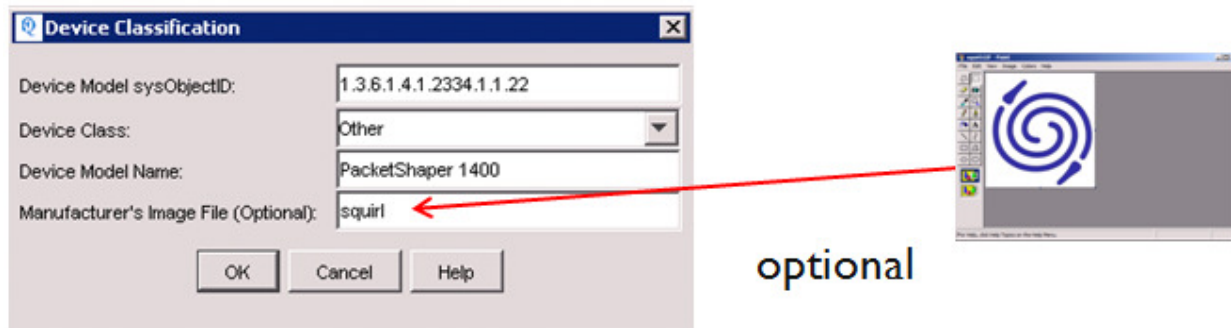
Those icons must be placed into D:\netqos\NetVoyant\NetVoyant\classes\redpoint\images



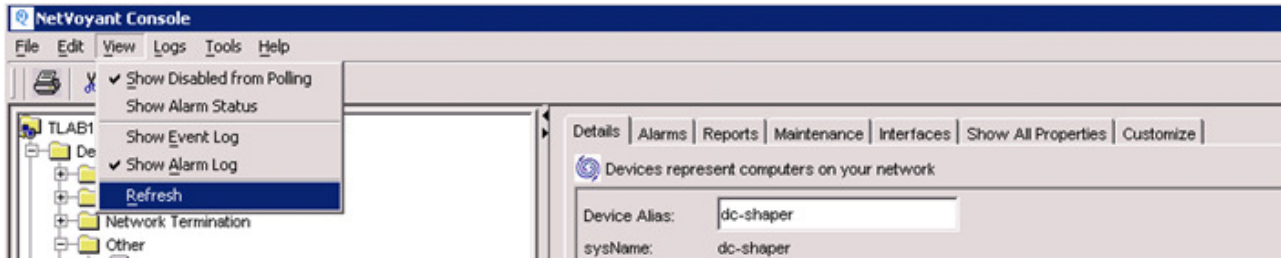
2. Go the CONFIG Tab and Choose Discovery - Device Models



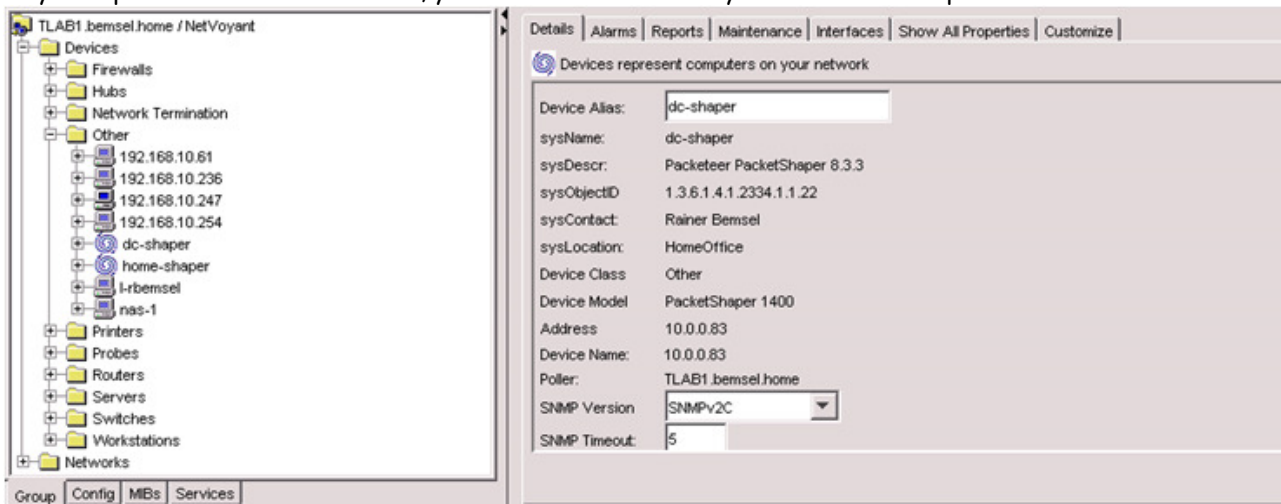
3. Click on ADD and type the OID of the chosen PacketShaper. Name the Device Model and add the name of the GIF File without extension.



If the IP address of the PacketShaper has been discovered previously you can refresh the View in order to see the Icon



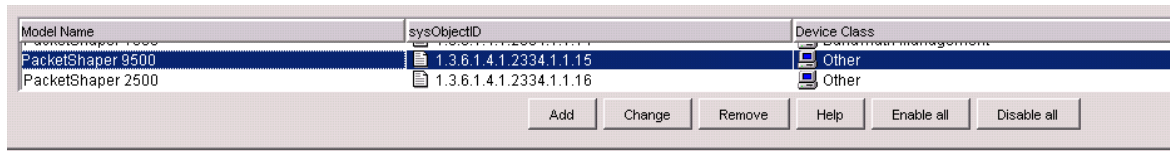
If you expand the tree under other, you will also see the newly added PacketShaper with basic SNMP values



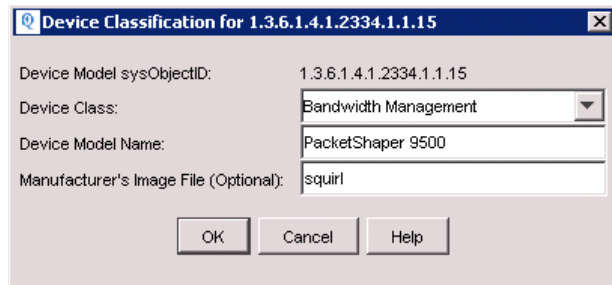
4. Add a New Device Class to group all PacketShaper under "Bandwidth Management" Currently, you see the PacketShaper under OTHER.

Model Name	sysObjectID	Device Class
PacketShaper 8500	1.3.6.1.4.1.2334.1.1.12	Other
PacketShaper 1550	1.3.6.1.4.1.2334.1.1.14	Other
PacketShaper 9500	1.3.6.1.4.1.2334.1.1.15	Other
PacketShaper 2500	1.3.6.1.4.1.2334.1.1.16	Other
PacketShaper 10000	1.3.6.1.4.1.2334.1.1.17	Other
PacketShaper 7500	1.3.6.1.4.1.2334.1.1.19	Other
PacketShaper 7500	1.3.6.1.4.1.2334.1.1.20	Other
PacketShaper 1700	1.3.6.1.4.1.2334.1.1.21	Other
PacketShaper 1400	1.3.6.1.4.1.2334.1.1.22	Other
PacketShaper 900	1.3.6.1.4.1.2334.1.1.23	Other
PacketShaper 4500	1.3.6.1.4.1.2334.1.1.5	Other
PacketShaper 1500	1.3.6.1.4.1.2334.1.1.6	Other
Shomiti Voyager Probe	1.3.6.1.4.1.2438	Probes
Inter Air	1.3.6.1.4.1.2475.1.3.1.1	Hubs
Windows NT	1.3.6.1.4.1.311.1.1.3.1	Workstations
Windows NT Workstation	1.3.6.1.4.1.311.1.1.3.1.1	Workstations

Highlight any PacketShaper

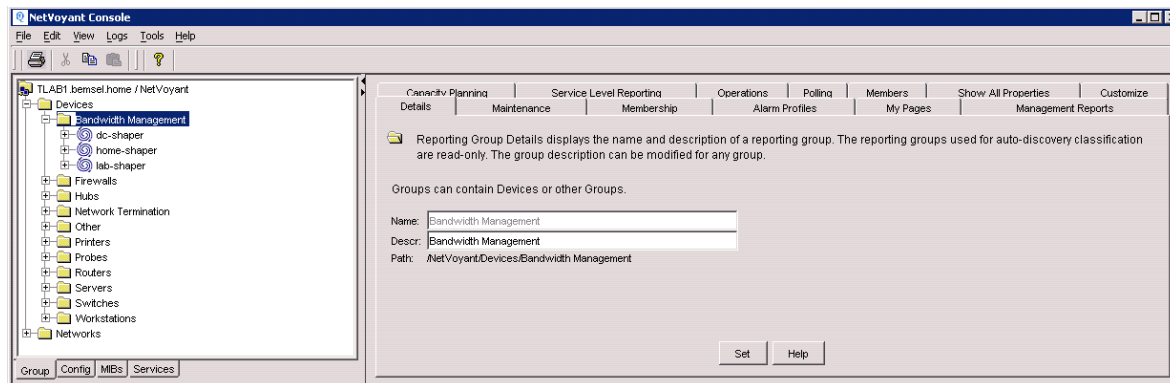


Click on **Change**



Type the new Device Class into the Field. This will be added into the drop-down list for future use. Do this will all other PacketShaper models you may have added.

Now, the last thing to do is to run a rediscover to get PacketShaper re-classified



Hint: you can add the new Device Class with the first PacketShaper, as the example with a BlueCoat Proxy shows

