

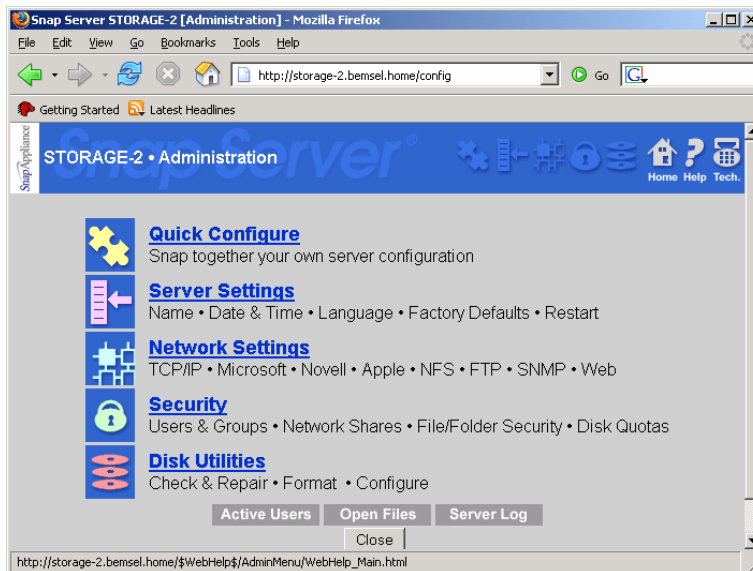


Set up Email Notification on Snap Server

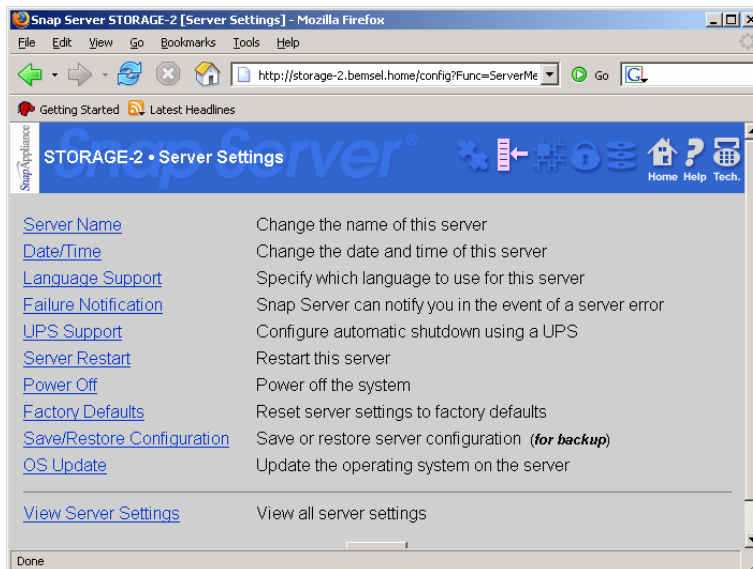
created by: Rainer Bessel - Version 1.0 - Dated: Nov/22/2005

This documents describes the necessary steps to setup Email Notification on the Snap Server. You could configure the Snap Server to automatically notify you by e-mail if it detects a critical error. For example, if a disk fails on your Snap Server, the server will send you an e-mail message.

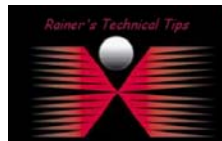
Connect to the the Snap Server WEB User Interface



Click on **Server Settings**



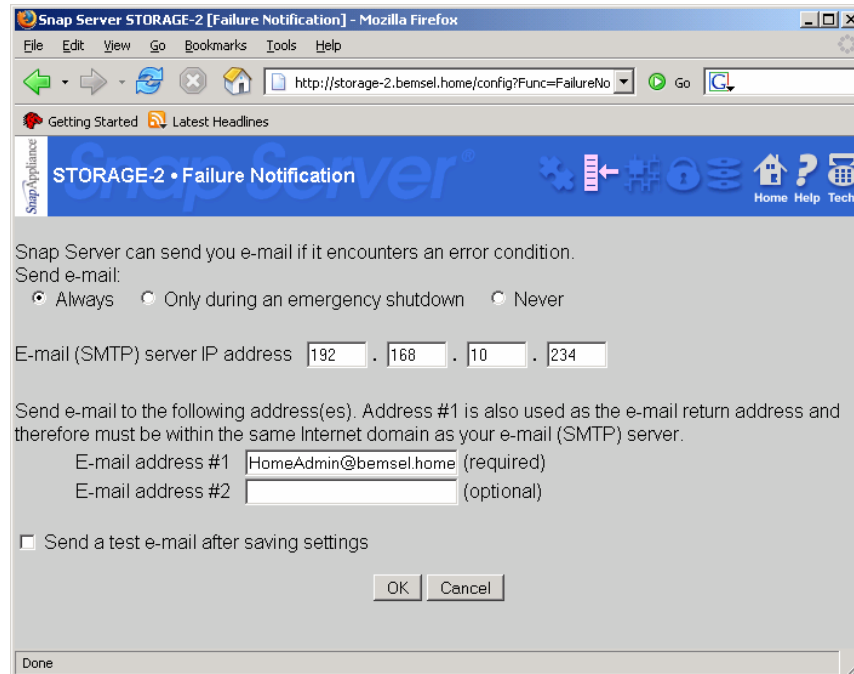
Click on **Failure Notification**



DISCLAIMER

This Technical Tip or TechNote is provided as information only. I cannot make any guarantee, either explicit or implied, as to its accuracy to specific system installations / configurations. Readers should consult each Vendor for further information or support.

Although I believe the information provided in this document to be accurate at the time of writing, I reserve the right to modify, update, retract or otherwise change the information contained within for any reason and without notice. This technote has been created after studying the material and / or practical evaluation by myself. All liability for use of the information presented here remains with the user.



Following Settings are possible:

1. Select when you want to be notified of errors:

- Always
- Only During an Emergency Shutdown
- Never

By default, the server does not send e-mail when server failures are detected.

2. Enter Email Server IP Address Enter the IP address of your mail (SMTP) server.

3. Enter a primary Email address. You can also define an optional Email Address

Enter the e-mail addresses to which you want to send mail if a failure occurs on your Snap Server. E-mail address #1 must be within the same Internet Domain as your mail server. This address is used as the "reply to" address by some mail servers.

Entering a second e-mail address sends the same message to a second e-mail address as well as the first. It cannot be used to replace the first address entered.

4. Send a Test E-mail Select this feature to send a test e-mail after you click OK (to save your settings).

5. Use this option to verify that your settings are correct.

6. OK Save your settings and return to the Server Settings menu or Cancel, which discards the changes

