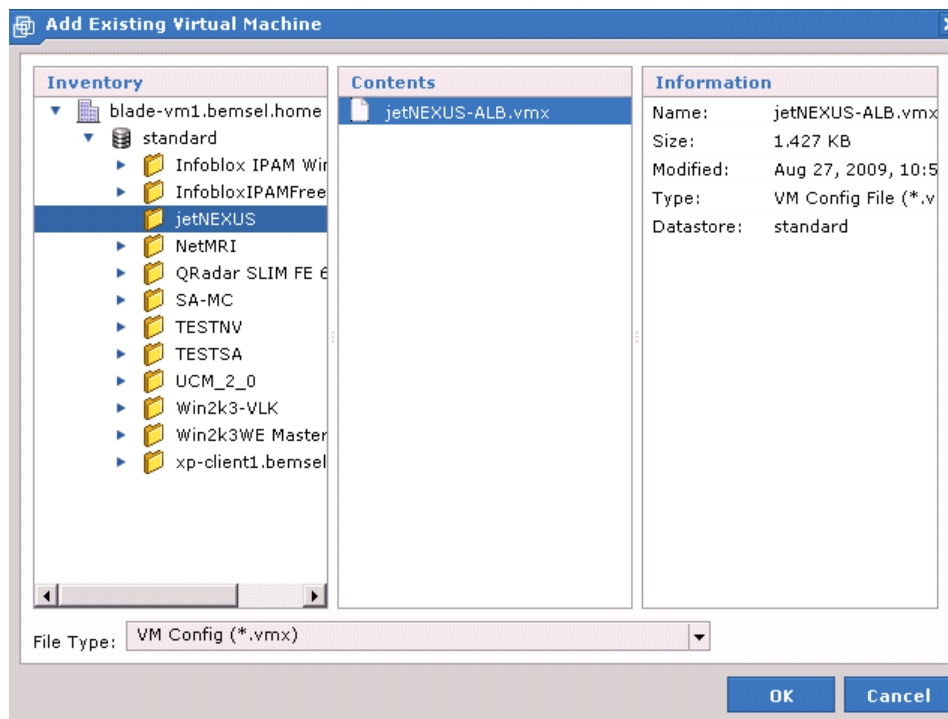




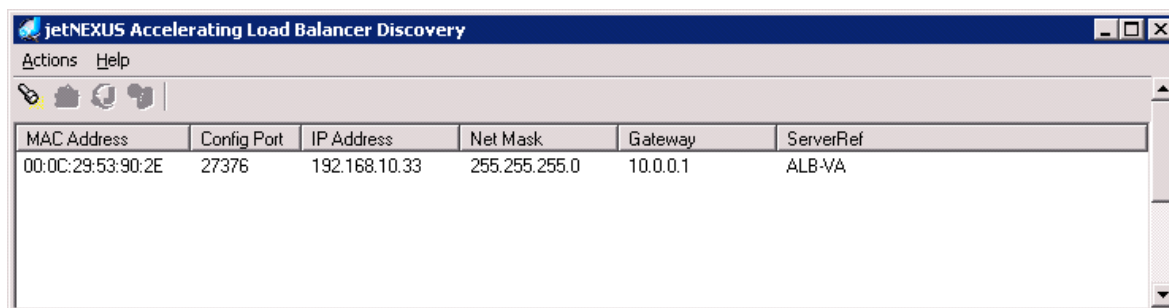
# Initial Setup of jetNEXUS

created by: Rainer Benschel - Version 1.0 - Dated: Dec/30/2009

The purpose of this document is to summarize the required steps to install jetNEXUS-ALB VA into VMware Server 2.0. Just download the virtual appliance from <http://www.vmware.com/appliances/>. Search for jetNEXUS and download the appropriate Archive. Extract the file to your VMware Server and add the virtual machine to the inventory.



The initial start will take some minutes. Don't worry if nothing seems to happen, but there are a lot of scripts in the background configuration for the first run. With the archive there should be a file called jnDiscover\_v3\_5.exe, which can easily be used to set a desired IP Address.



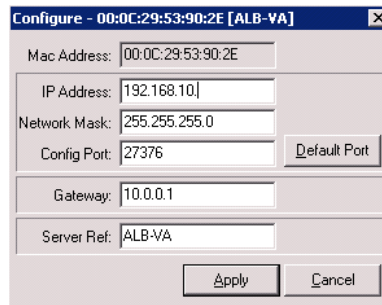
Highlight the line, click on Actions and Configure



#### DISCLAIMER

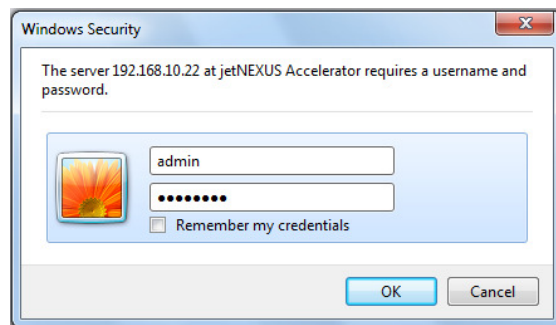
This Technical Tip or TechNote is provided as information only. I cannot make any guarantee, either explicit or implied, as to its accuracy to specific system installations / configurations. Readers should consult each Vendor for further information or support.

Although I believe the information provided in this document to be accurate at the time of writing, I reserve the right to modify, update, retract or otherwise change the information contained within for any reason and without notice. This technote has been created after studying the material and / or practical evaluation by myself. All liability for use of the information presented here remains with the user.



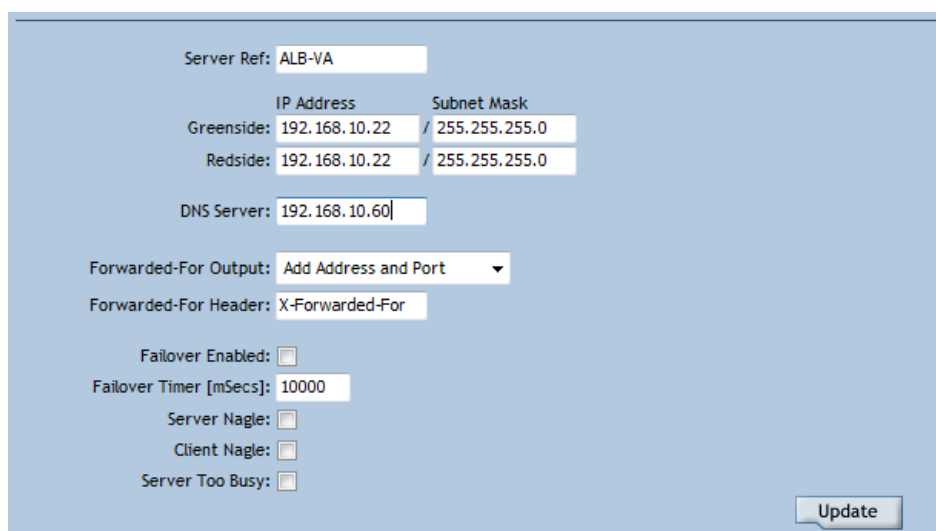
You can also change the Configuration Port if you want. I also suggest performing a reboot using that tool, after you have done your changes.

Use a web browser to configure the basic parameters: <https://192.168.10.22:27376/> You will see a certificate error. Click to accept and you should get a logon window.



Default User: **admin**, default password **jetnexus**

1. SETUP -> APPLIANCE: Add DNS Server and leave Greenside and Redside with the same IP Address. I'm using the Appliance as One-ARMED LoadBalancer. You have to have an entry on both sides.



2. SETUP -> NETWORK: Add Default Gateway

Destination	Mask	Gateway
Greenside : 0.0.0.0	0.0.0.0	192.168.10.254
Redside :		

Click on **Update** and jetNEXUS will resolve Gateway IP Address with DNS Name.

Destination	Mask	Gateway
Greenside : default	0.0.0.0	stargate.bemsel
Redside :		

3. SETUP -> IP SERVICES: Add Channel (Virtual IP + Port)

Listen On	Content Servers
<input type="button" value="+ Add IP Address"/>	
<input type="button" value="Refresh"/> <input type="button" value="Update"/>	

This is the page, where the Content Servers are added as well.

IP Address	Subnet Mask	Port	LB Policy	Round Robin	
192.168.10.24	/ 255.255.255.0	: 80	Round Robin		
Layer 7	Data	HTTP	Service Desc		
By Channel	Cache	TCP Connection	Monitoring		
No SSL	SSL	Max Connections			
				IP Address	Port
				200	Server Group
				<input type="checkbox"/>	Pool
				<input checked="" type="checkbox"/>	192.168.10.47 : 80
				<input checked="" type="checkbox"/>	192.168.10.48 : 80
				<input checked="" type="checkbox"/>	192.168.10.49 : 80
				<input type="button" value="+ Add Content Server"/>	<input type="button" value="Update"/>

= Active and Reachable

More Details with configuration options can be found in the user manuals