



# Installing Enterecept Server and Console

created by: Rainer Bemsel - Version 1.0 - Dated: May/10/2003

The purpose of this document is to provide you with all necessary steps to install Enterecept Server and Enterecept Console. I've used a 45 days evaluation copy to install the Enterecept product. To install this evaluation software, you must have Microsoft MSDE or Microsoft SQL Server installed.

## Management Server Recommendation for Enterecept 4.0 looks like this:

### Standard Installation

- 1.5 Ghz Pentium IV or better
- 1 GB RAM
- 20 GB Hard Disk
- Windows 2000 Server or Advanced Server SP2 or higher
- SQL Server 2000 SP 2 or higher
- Static IP Address
- No other applications installed
- TCP Ports 443 and 5005 available

### Configuration for less than 20 agents

- 800 Mhz Pentium III or better
- 512 MB RAM
- 20 GB Hard Disk
- Windows 2000 Server or Advanced Server SP2 or higher
- SQL Server 2000 SP 2 or higher
- Static IP Address
- No other applications installed
- TCP Ports 443 and 5005 available

### Console Minimum Installation

- 1.5 Ghz Pentium IV or better
- 256 MB RAM
- 100 MB free Hard Disk
- Windows 2000 Server or Advanced Server SP2 or higher
- Windows NT 4 Server or Workstation, SP 6a
- Windows XP SP 1

## To prepare your server, first install MSDE

To download MSDE 2000 go to Microsoft's Website:

<http://www.asp.net/msde/default.aspx?tabindex=0&tabid=1>

Double click on **SQL2KdeskSP3.EXE** – You will have to agree to License Agreement in order to continue the installation



#### DISCLAIMER

This Technical Tip or TechNote is provided as information only. I cannot make any guarantee, either explicit or implied, as to its accuracy to specific system installations / configurations. Readers should consult each Vendor for further information or support.

Although I believe the information provided in this document to be accurate at the time of writing, I reserve the right to modify, update, retract or otherwise change the information contained within for any reason and without notice. This technote has been created after studying the material and / or practical evaluation by myself. All liability for use of the information presented here remains with the user.

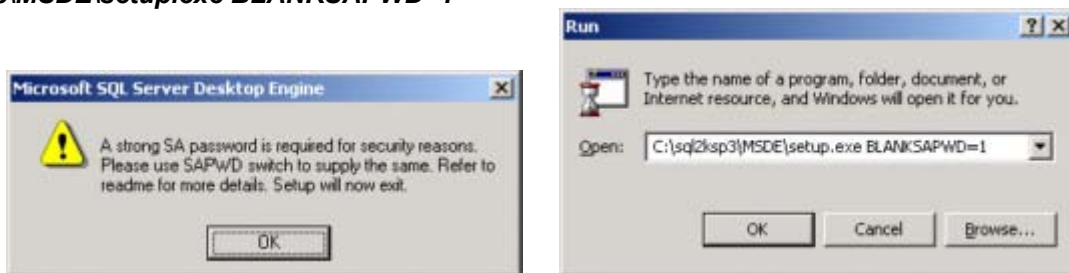
You will be asked where to unpack installation files



Move to the folder, where all files have been unpacked. If you accepted default location, you will find the files at **c:\sql2ksp3\MSDE** Double click on **SETUP.EXE**

Windows Installer will initialize. Please wait while Windows configures Microsoft SQL Server Desktop Engine. If you were prompted regarding strong SA password, you can run setup by using a certain switch.

**c:\sql2ksp3\MSDE\setup.exe BLANKSAPWD=1**



The installation itself is an automatic process.

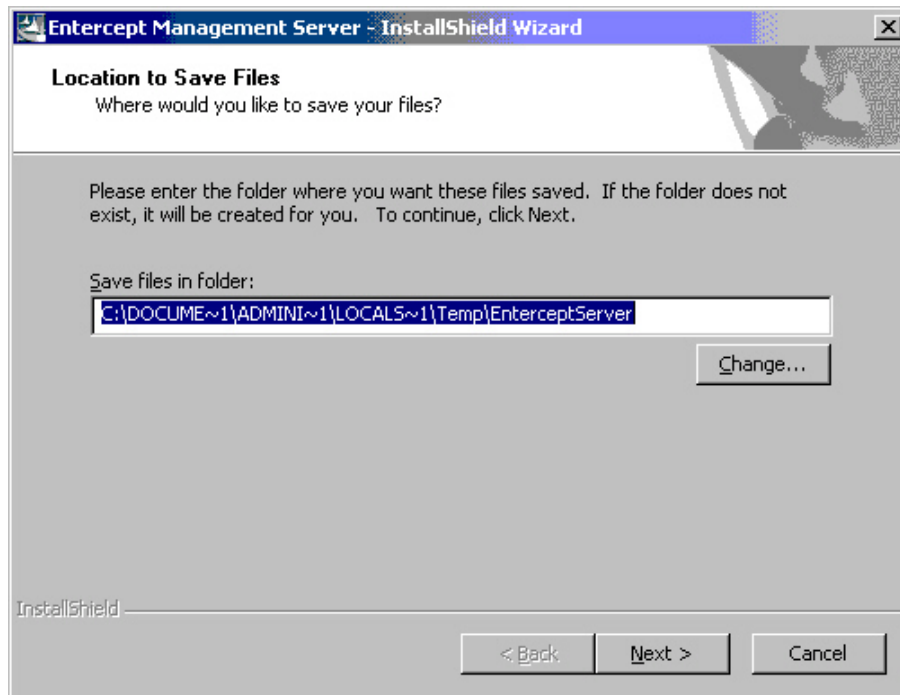


When all the installation scripts were done, you will be prompted to restart the server. Please allow the server to restart

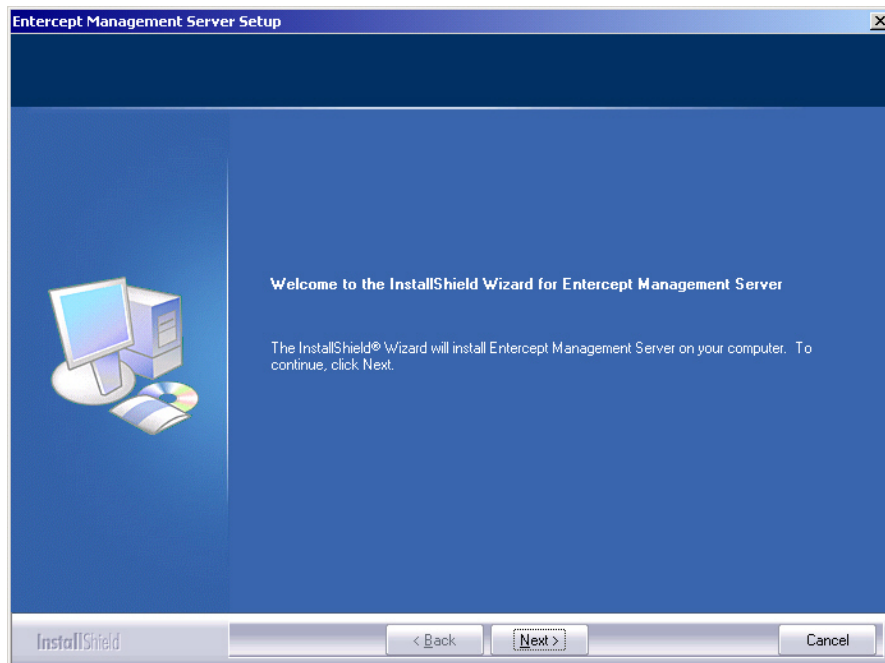


## Installing Enterecept Server 4.0

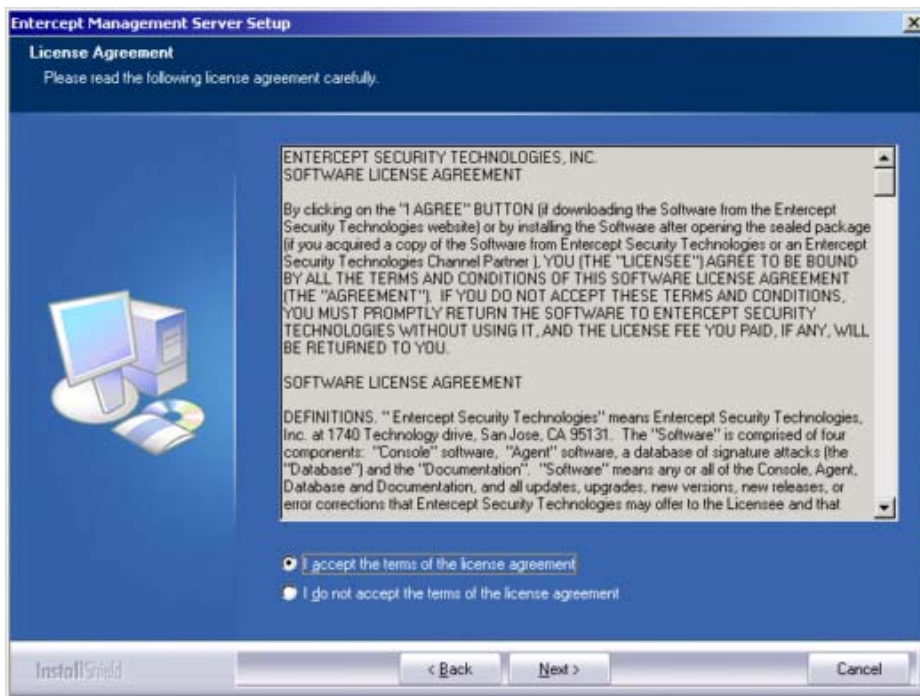
Locate the File EntereceptServer.exe and double click in order to run the installation



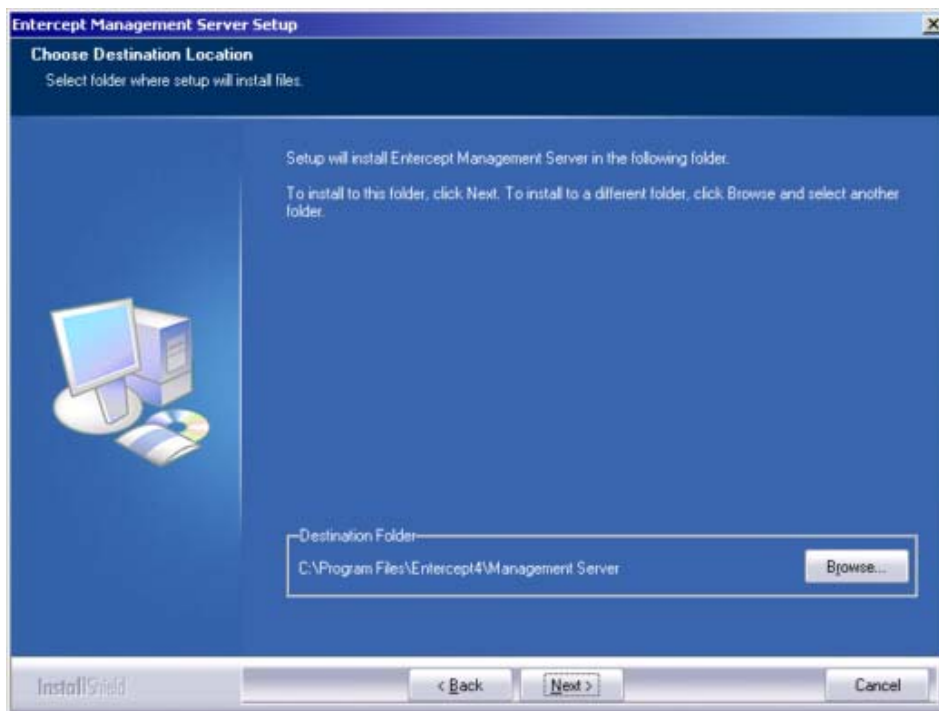
The installation files will be extracted and Setup Launcher will start. A couple of popup windows will occur. The installation process will determine if SQL server is running on the system.



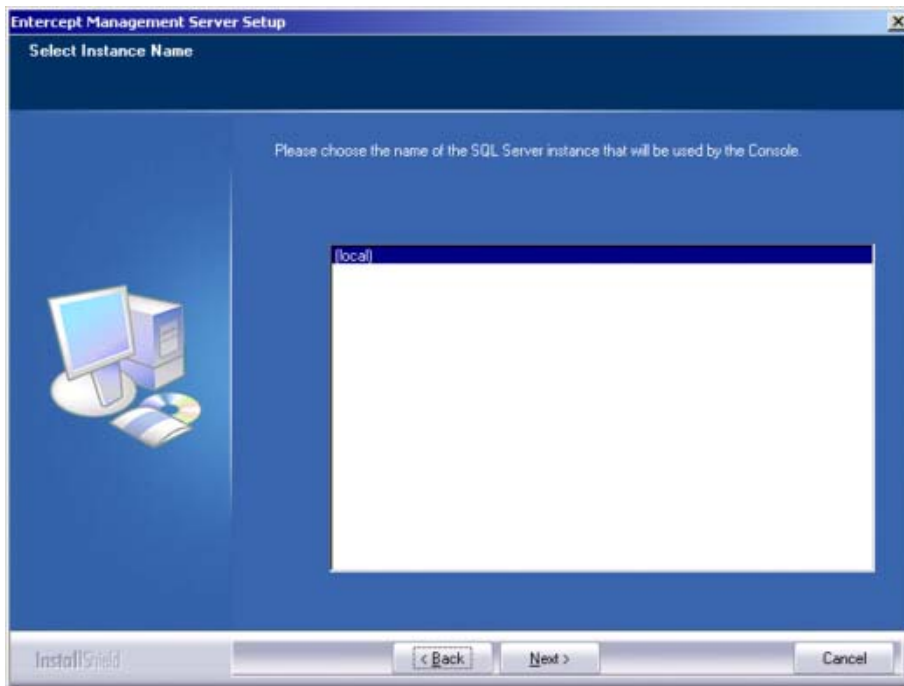
In order to continue the installation you will have to accept the license agreement.



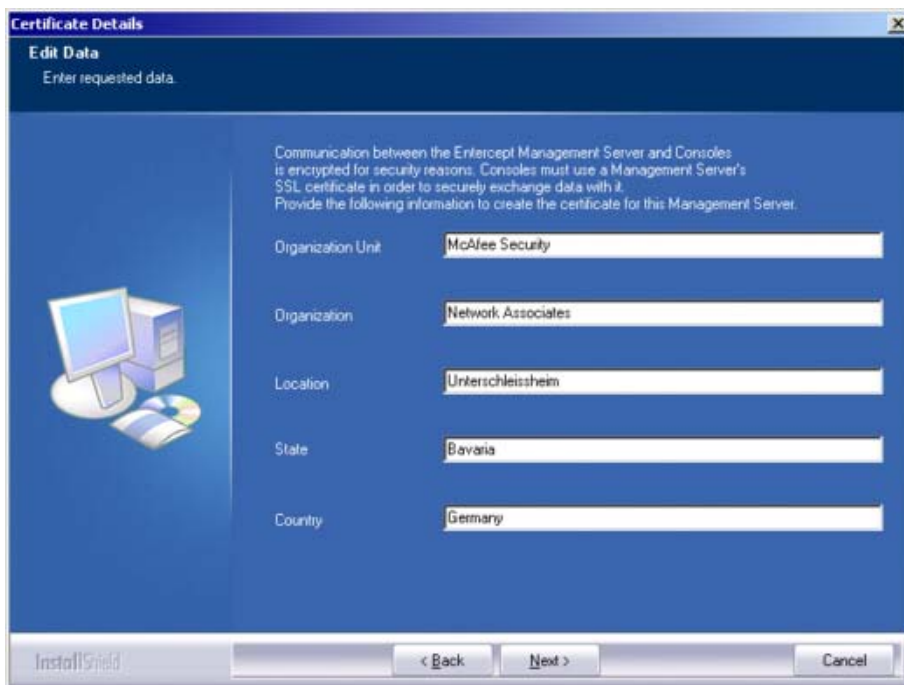
Choose Destination Location, where Setup will install Enterecept Management Server.



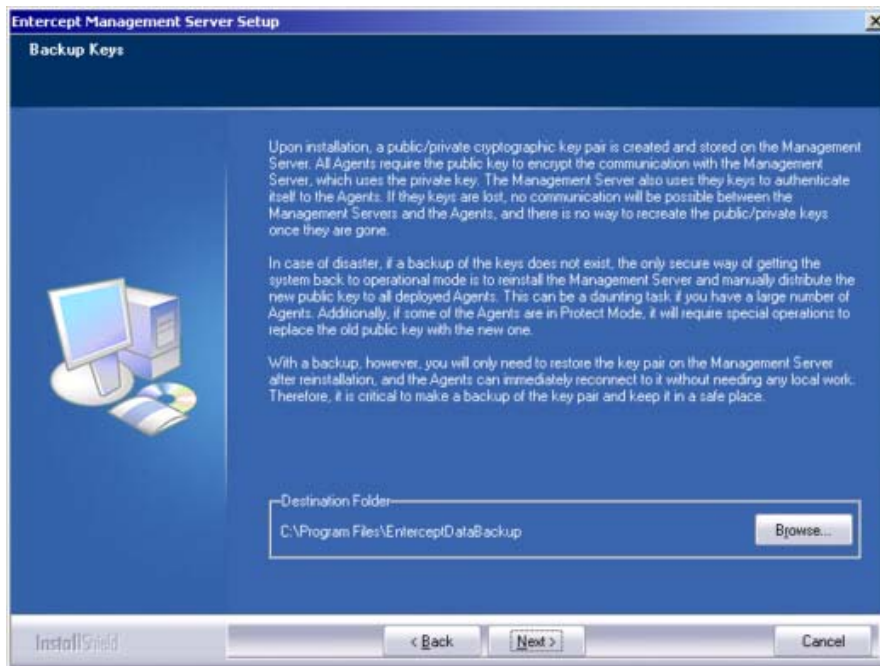
Please choose the name of the SQL Server instance that will be used by the console. As I run a local MSDE 2000, the installation has found a local instance of my SQL Server.



Communication between the Entercept Management Server and Consoles is encrypted for security reasons. Consoles must use a Management Server's SSL certificate in order to securely exchange data with it. You have to provide some information to create the certificate for this Management Server.



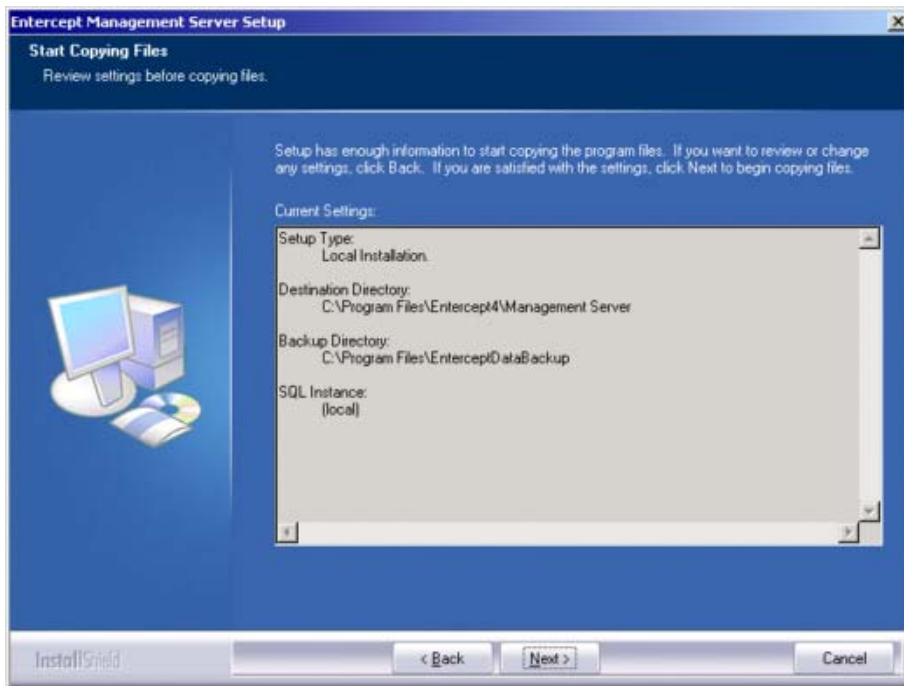
In case of a disaster, if a backup of keys does not exist, the only secure way of getting the system back to operational mode is to reinstall the Management Server and manually distribute the new public keys to all deployed Agents. Therefore, you will be asked to backup the keys, by choosing a destination folder



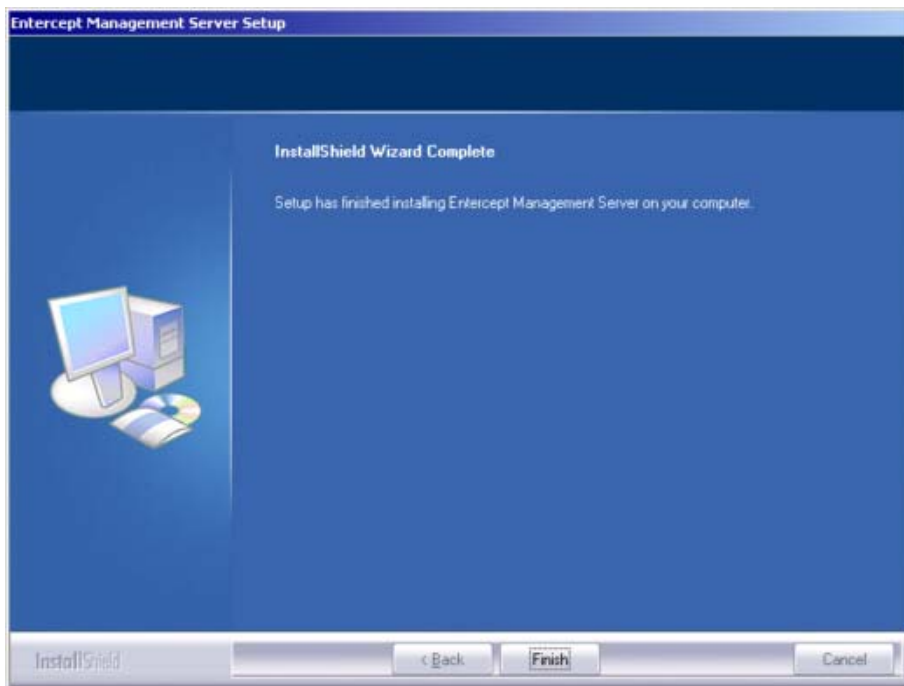
In this example I've used a local installation. However, if you plan to run a domain installation, you will be able to retrieve domain user groups from the active directory services and PDCs.



Now you have all pre-selections done and the setup routine will start copying files and implementing a couple of services including keys.



Finally the server has been installed. To access the server you need to have the console installed.

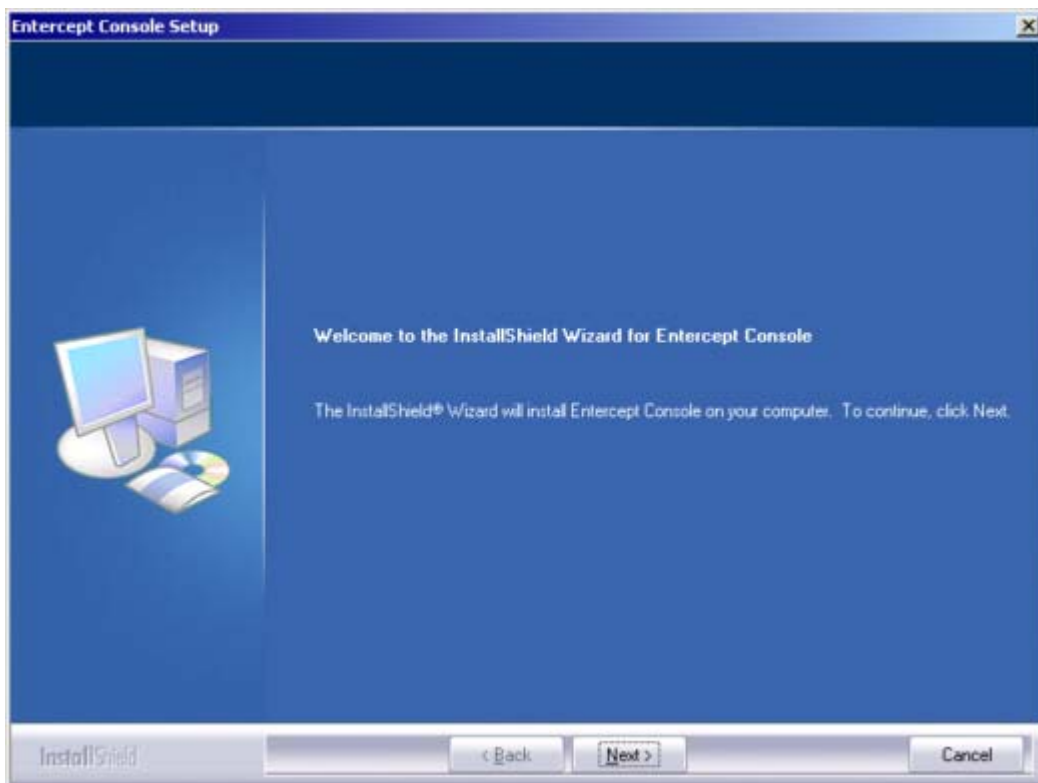


## Installing Enterecept Console

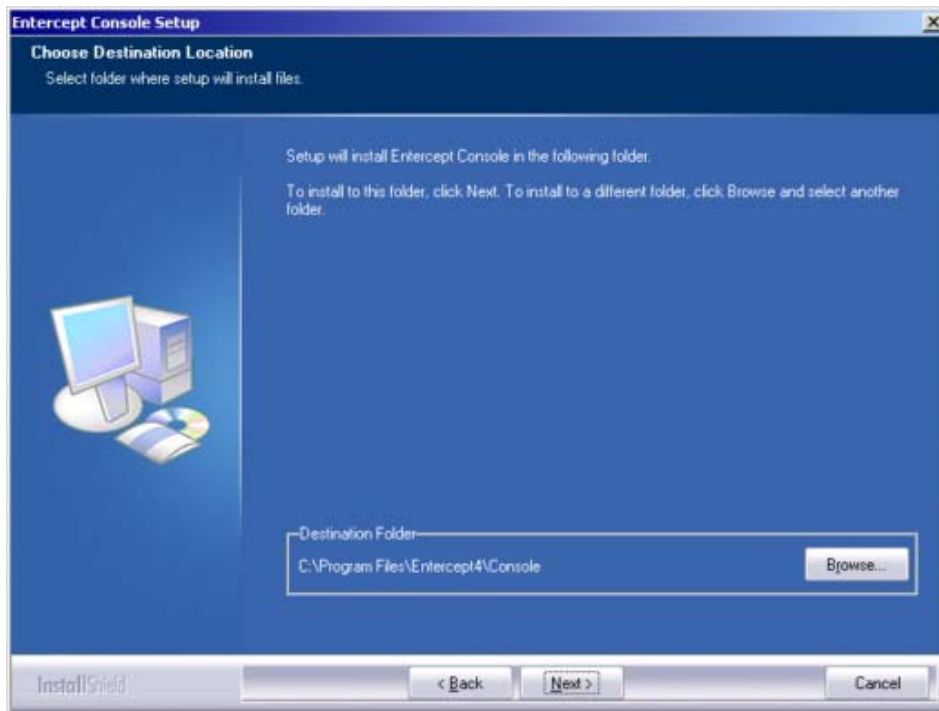
To install Enterecept Console, double click on EntereceptConsole.EXE. You will be asked to locate a folder to store the installation files. The InstallShield Setup Launcher will start.



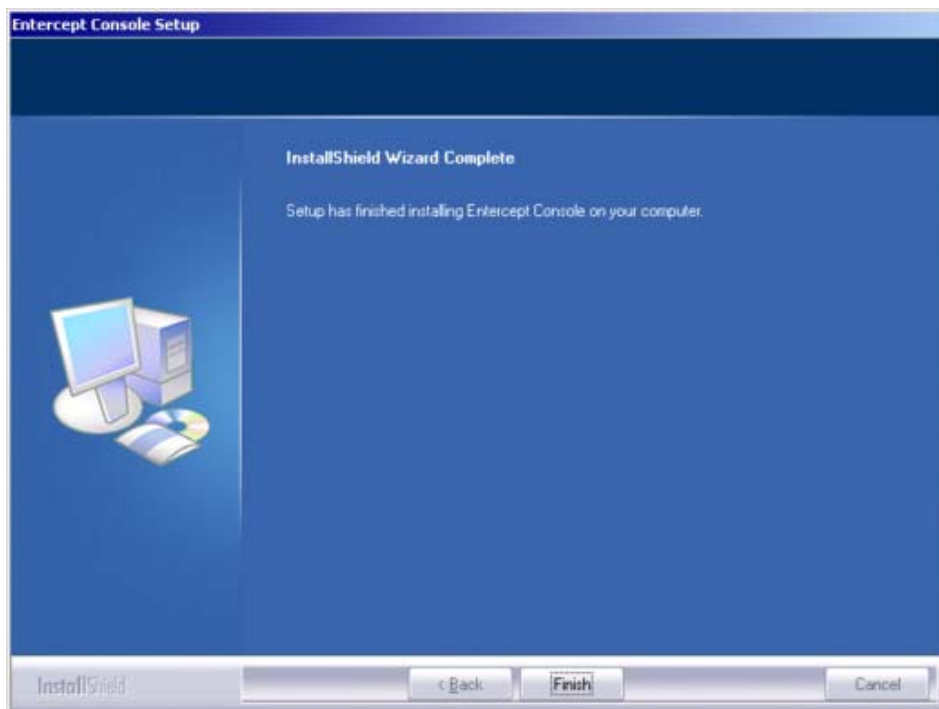
The install shield will install Enterecept Console on your computer. To continue click on NEXT



To install to specified folder, click NEXT. Here you can change to a different folder, by clicking on Browse and selecting another folder



The installation is quiet fast, as there are only a couple of files to be copied. Click on FINISH



**Note:** Before attempting to login, please allow the system to reboot.



### Entering First Login User ID and Password

- Click Start – Programs – Entercept 4 – Entercept Console
- Username will be **GlobalAdmin** and the password will be **GlobalAdmin** (both case sensitive)

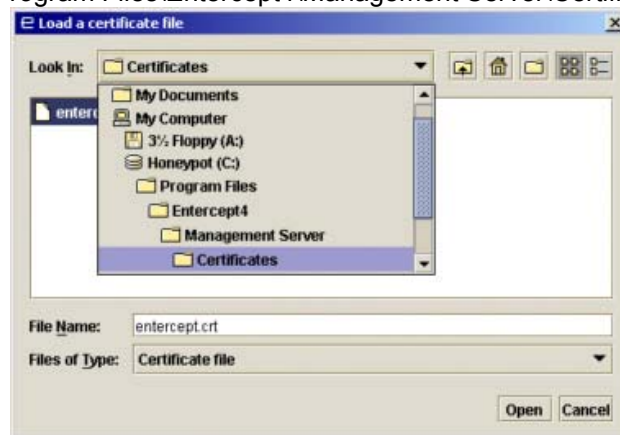


Next step would be the registration of a new management server. Click on EDIT



Click on Load Certificate and browse to the certificate location. On a standard installation it would be on:

C:\Program Files\Entercept4\Management Server\Certificates



Finally, you should get a successfully import of the server's certificate



Perform a logon and change your password. You will be forced during first login process to do so.



When login successfully, you will see as a first look the event monitor

