

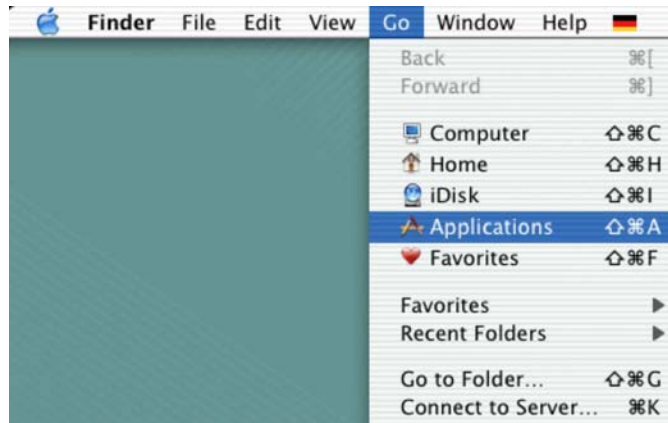


# How to enable Root Account on MAC OS X

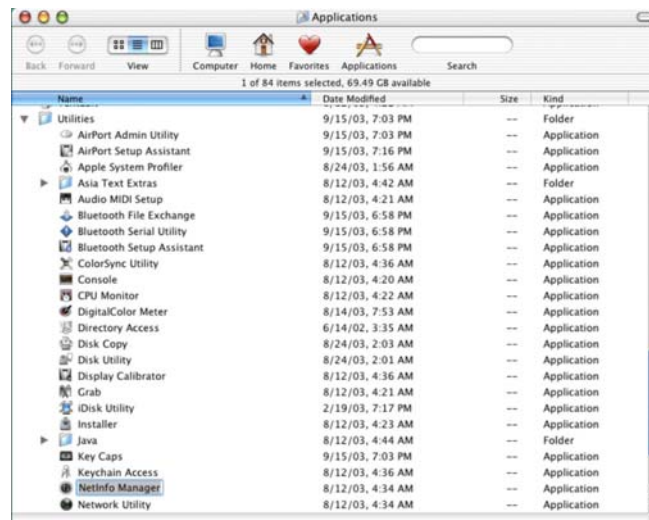
created by: Rainer Bemsel - Version 1.0 - Dated: Nov/15/2003

The purpose of this document is to provide you the necessary steps on "How to enable Root Account on MAC OS X". However, be very careful to enable the Root User because of security issues.

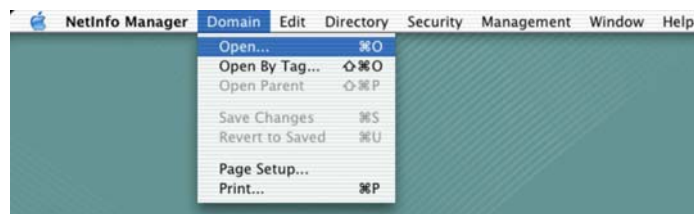
1. From the Finder, hit Command + Option + A to open the Applications folder.



2. Open the Utilities folder.



3. Open the NetInfo Manager application and select Domain Open.



## DISCLAIMER

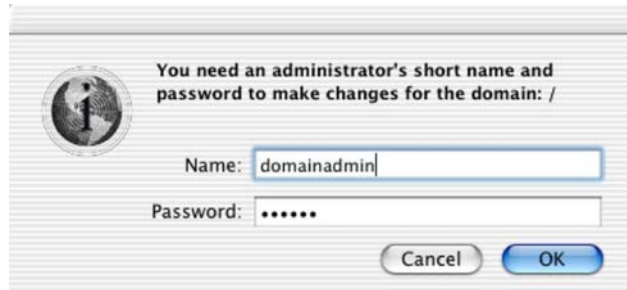
This Technical Tip or TechNote is provided as information only. I cannot make any guarantee, either explicit or implied, as to its accuracy to specific system installations / configurations. Readers should consult each Vendor for further information or support.

Although I believe the information provided in this document to be accurate at the time of writing, I reserve the right to modify, update, retract or otherwise change the information contained within for any reason and without notice. This technote has been created after studying the material and / or practical evaluation by myself. All liability for use of the information presented here remains with the user.

4. On Netinfo Manager, select Security > Authenticate.



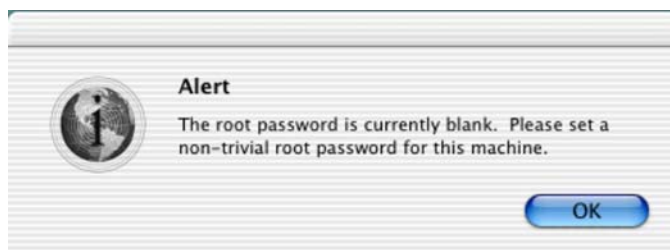
5. Enter an administrator's name and password in the dialog and click on the OK button.



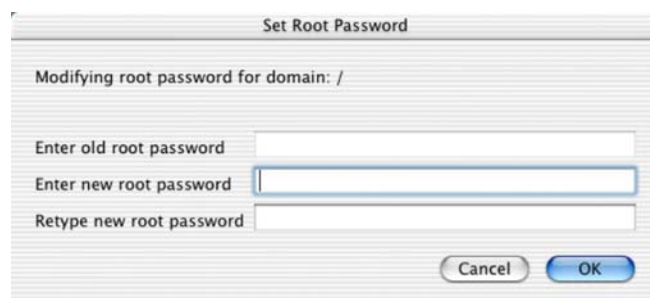
6. Select menu item: Domain > Security > Enable Root User.



7. You'll get an alert about password for the root user.



8. Enter the password



Click OK and Quit the NetInfo Manager application by selecting menu item: NetInfo Manager > Quit NetInfo Manager.

